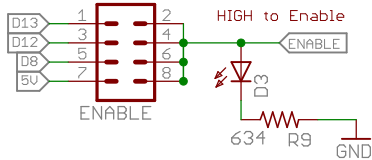




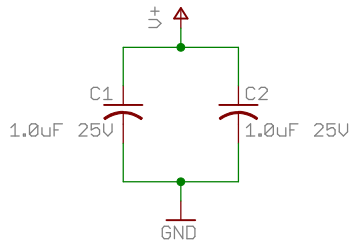
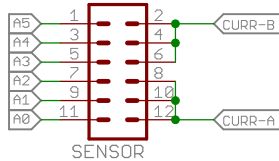
# Motor Control for Arduino

## 7V-28V, 12A Continuous - 40A Peak

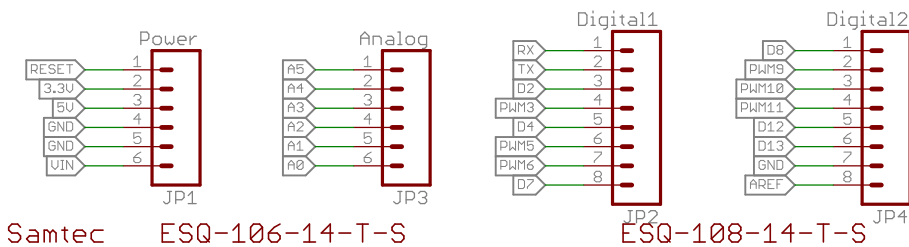
### Enable Select



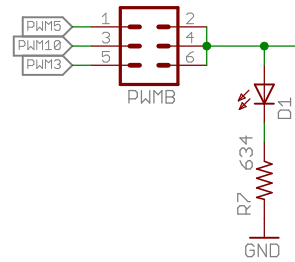
### Current Feedback Select



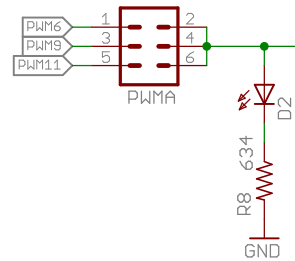
### Arduino Headers



### PWM B Source

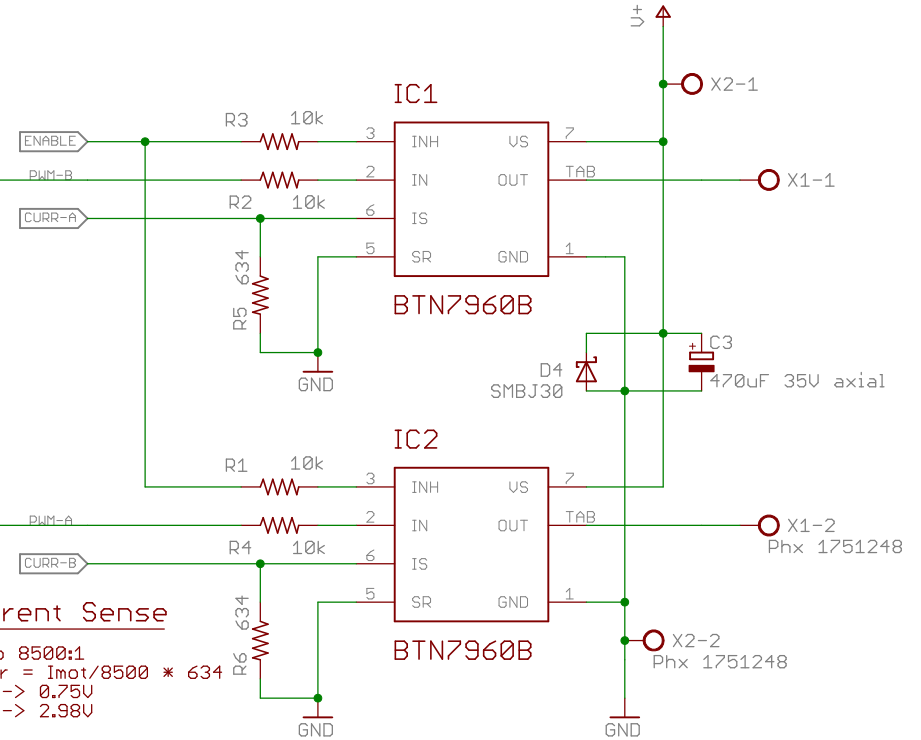


### PWM A Source



### Current Sense

Ratio 8500:1  
 $V_{curr} = I_{mot}/8500 * 634$   
 10A -> 0.75V  
 40A -> 2.98V



Copyright 2010 by Robot Power  
 Released under the Creative Commons  
 Non-Commercial, Attribution, Share-Alike Licence

## MegaMoto Shield v1.5

TITLE: MegaMotoShield-v015

Document Number:

REV:

Date: 11/8/2010 4:23:36 PM

Sheet: 1/1